

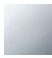

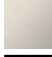



33 860 875



- 240mm projection
- pivotable 360°
- air-enriched flow and spray flow
- height of mixer 685 mm
- height up to aerator 129 mm
- hole diameter 35 mm
- 2 x pressure hose with 3/8" cap nut
- sprayface with anti-scaling system
- max. flow 5.7 l/min at 3 bar flow pressure
- lead-free
- This product can help a building meet the requirements of Green Building Rating Systems, e.g. LEED®, BREEAM®, DGNB

Intrinsic protection against back flow.

Switch back and forth between aerator and spray mode while water is running.

| | | |
|---|-----------------------|--------------------|
|  | Chrome | 33 860 875-00 0010 |
|  | Brushed Platinum | 33 860 875-06 0010 |
|  | Platinum | 33 860 875-08 0010 |
|  | Dark Chrome | 33 860 875-19 0010 |
|  | Brushed Chrome | 33 860 875-93 0010 |
|  | Brushed Dark Platinum | 33 860 875-99 0010 |

Recommended miscellaneous

AIR SWITCH Control button - Chrome 10 713 970-00



Recommended miscellaneous

Dispenser without rosette - Chrome 82 424 970-00





TARA ULTRA Profi single-lever mixer - Chrome

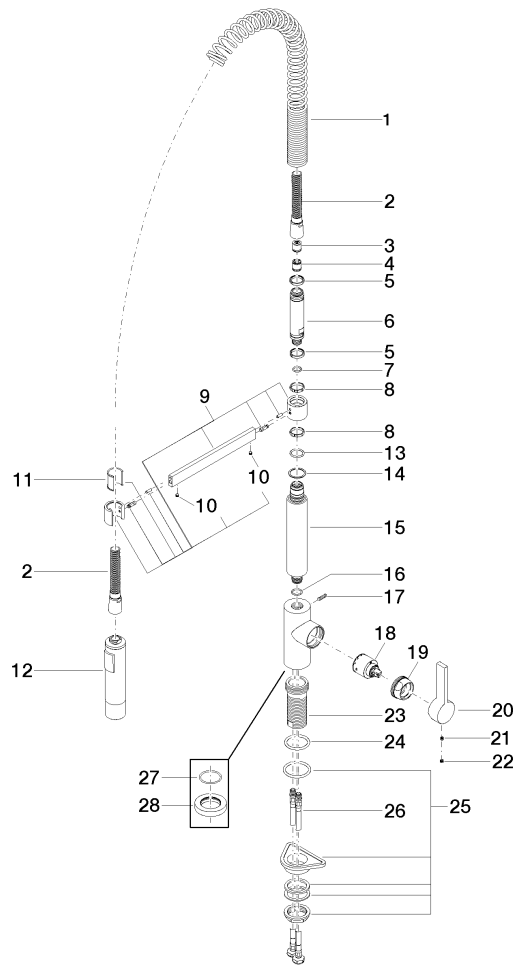
TARA ULTRA

33 860 875

Certificates

IAPMO_N-4976 (2). IAPMO_4976 (3). IAPMO_6397 (1).

33 860 875



33 860 875

Spare parts list

| No. | Item Number | Name | Quantity used | Delivery time |
|-----|--------------------|---------------------|---------------|---------------|
| 1 | 09 16 02 035 90 | spring | 1 | 2 |
| 2 | 90 30 02 065 00-00 | hose | 1 | 10 |
| 3 | 90 23 01 080 00 90 | back-flow preventer | 1 | 2 |
| 4 | 90 23 01 141 00 90 | back-flow preventer | 1 | 2 |
| 5 | 09 14 15 024 90 | ring | 2 | 2 |
| 6 | 09 30 01 067 10-00 | adaptor | 1 | 10 |
| 7 | 90 14 10 077 00 90 | seal | 1 | 2 |
| 8 | 09 28 10 181 90 | ring | 2 | 2 |
| 9 | 04 17 20 029 00-00 | holder | 1 | 10 |
| 10 | 90 31 11 112 00 90 | pin | 2 | 2 |
| 11 | 09 18 40 118 90 | sleeve | 1 | 2 |
| 12 | 04 12 11 092 10-00 | shower | 1 | 10 |
| 13 | 09 14 10 100 90 | seal | 1 | 2 |
| 14 | 09 28 10 122 90 | ring | 1 | 2 |
| 15 | 09 11 10 072 10-00 | connection | 1 | 10 |
| 16 | 90 14 10 055 00 90 | seal | 1 | 2 |
| 17 | 04 31 11 113 00 90 | pin | 1 | 2 |
| 18 | 90 15 05 045 00 90 | cartridge | 1 | 2 |
| 19 | 09 24 04 107-00 | nut | 1 | 10 |
| 20 | 09 20 79 040-00 | handle | 1 | 10 |
| 21 | 90 31 11 030 00 90 | pin | 1 | 2 |
| 22 | 90 31 20 109 00 90 | plug | 1 | 2 |
| 23 | 09 30 01 111 20 90 | sleeve | 1 | 2 |
| 24 | 09 14 10 036 90 | seal | 1 | 2 |
| 25 | 04 23 10 044 02 90 | fixing set | 1 | 2 |
| 26 | 04 30 04 107 00 90 | hose | 2 | 2 |
| 27 | 09 14 10 149 90 | seal | 1 | 2 |
| 28 | 09 28 10 035-00 | rosette | 1 | 10 |